

## ADWR Contact

Wesley Hipke  
Modeling Section, Manager  
ADWR  
3550 N. Central Ave.  
Phoenix, Arizona 85012  
(602) 771-8560  
modeling@azwater.gov

## Current Calibration Periods & Scheduled Updates for Groundwater Models Developed By ADWR

### Pinal AMA

Calibration: 1922 – 2009  
Model Update in 2011

### Phoenix AMA (SRV Model)

Calibration: 1983- 2006  
Model Updated in 2008

### Prescott AMA

Calibration: 1939 -2004/05  
Model Updated in 2007

### Tucson AMA

Calibration: 1940 - 2009  
Model Update in 2011

### Santa Cruz AMA

Calibration: 1997- 2002  
Model Updated in 2007

### Yuma Area

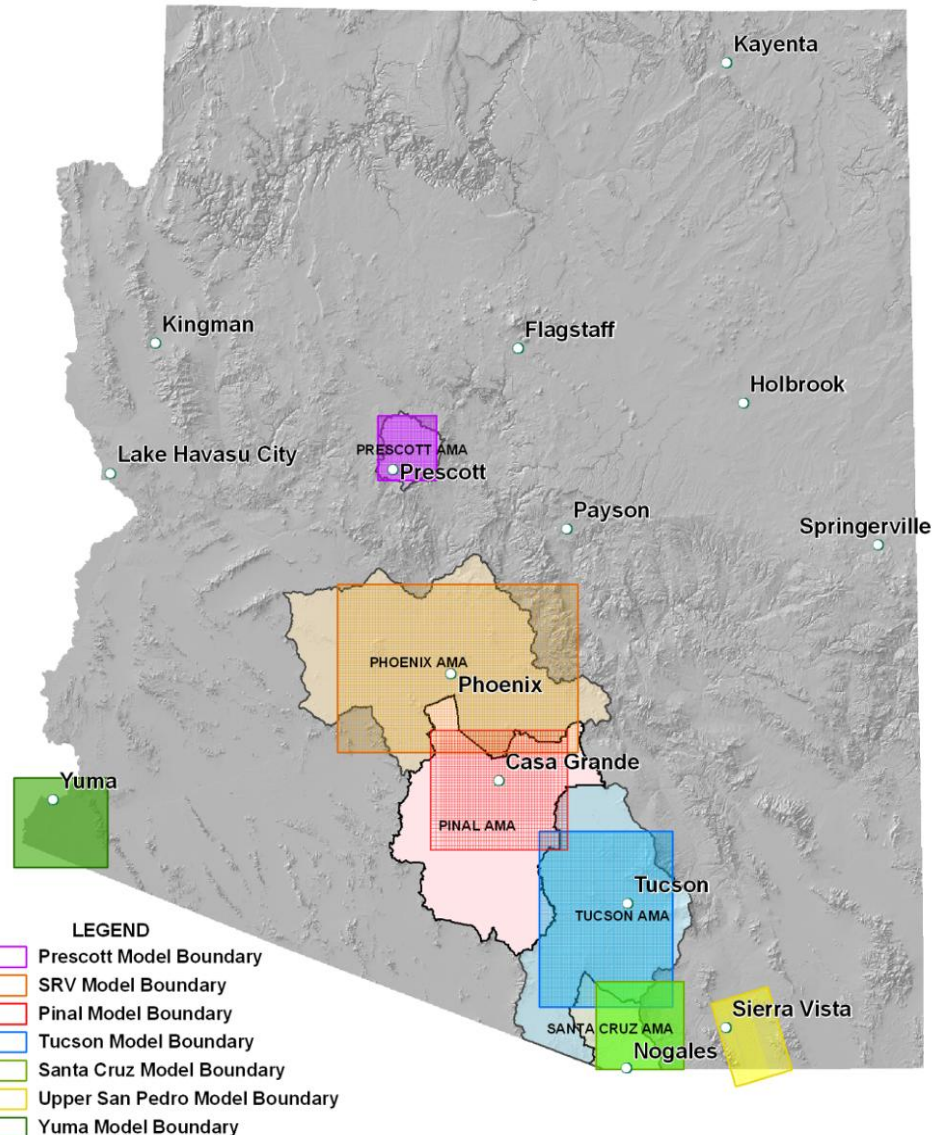
Calibration: 1978 - 1989

### Upper San Pedro Area

Calibration: 1940– 1990

**ADWR's Groundwater Modeling Unit Supports Water Management in Arizona Through the Development of Numeric Groundwater Models.**

Groundwater Models - Arizona Department of Water Resources



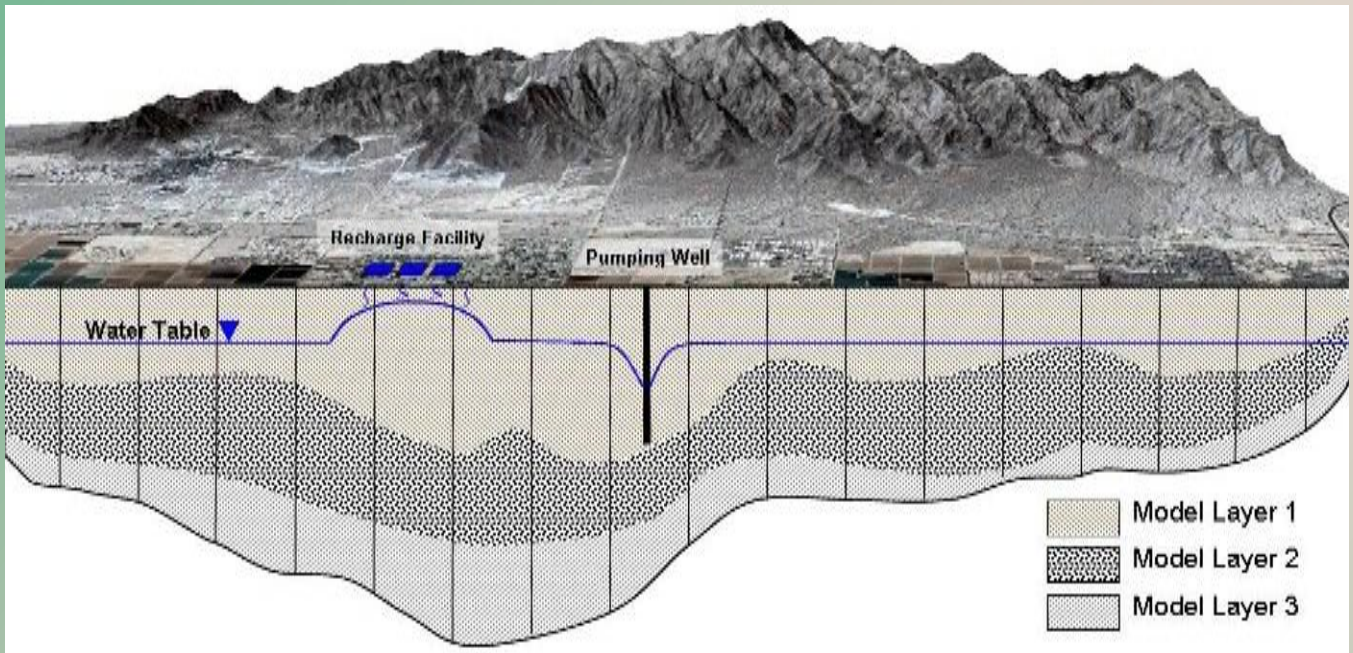
[www.azwater.gov](http://www.azwater.gov)



## Purpose of Groundwater Models:

- Provide a tool that can be used to simulate past, present, and future impacts of water use on aquifers.
- Allow water resource planners to make long-term management decisions based on potential impacts of future water uses on Arizona's groundwater resources.

Numeric Groundwater models assist our understanding of aquifer systems and provide a representation of the landscape that can be used to quantify the potential future impacts of various assumptions concerning future groundwater pumping and recharge.

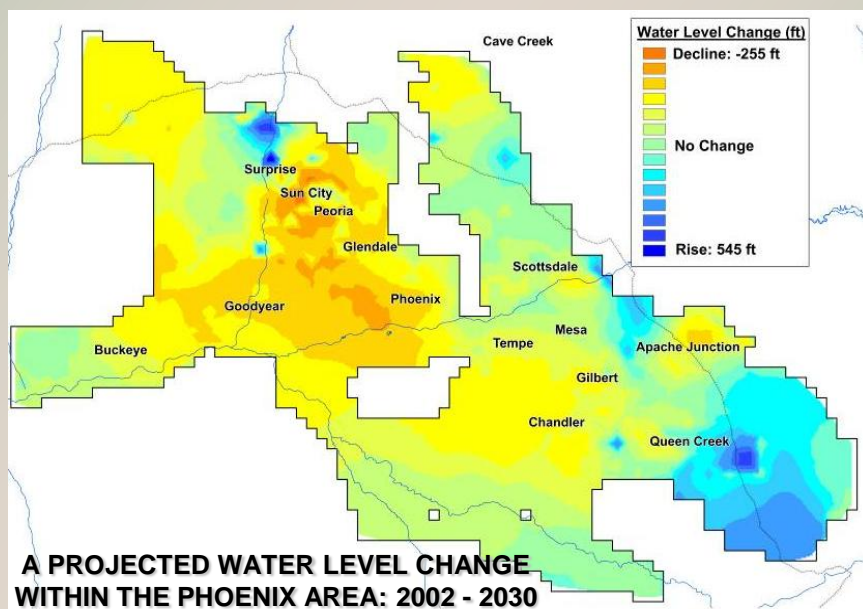


### What Information is Used for ADWR Groundwater Model Development?

- Data from well logs, geophysical studies, and various hydrologic reports
- Data from crop surveys, stream gages, precipitation stations and data submitted to the Department from various permit holders.
- Data collection sources include the ADWR, USGS, academic institutions, municipalities, water companies, Indian communities, irrigation districts, and private entities.

### How are the ADWR Groundwater Models Used?

- Models quantify the effects of various groundwater management and water conservation strategies and programs
- Models test various predictive scenarios for AMAs.
- Assist various agencies (EPA, Bureau of Reclamation, AZ DEQ) and public groups (East Valley Water Forum) in developing models for specific user objectives.
- Provide information for regional and local water budgets



### Additional Modeling Unit Tasks:

- Provide technical guidance related to submitted applications.
- Publication of model reports, databases related to hydrologic information, and model datasets.
- Provide modeling education and outreach for the ADWR and public

**A PROJECTED WATER LEVEL CHANGE WITHIN THE PHOENIX AREA: 2002 - 2030**